

Question: I am a user, accessing AMU Internet Services, using Wired-LAN. I am not sure if my DNS is correctly configured. How can I verify the same?

Answer: Please follow the steps, given below:

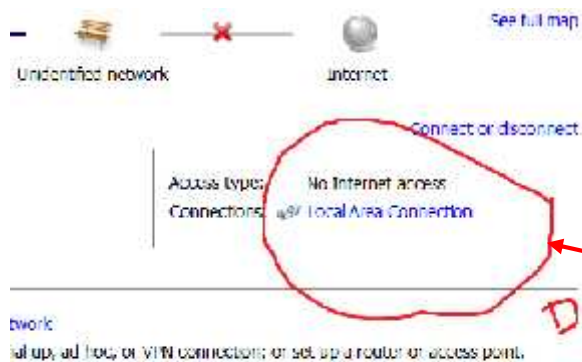
Step-1: Please right click on the bottom right of the computer.



Step-2: Open network and sharing center

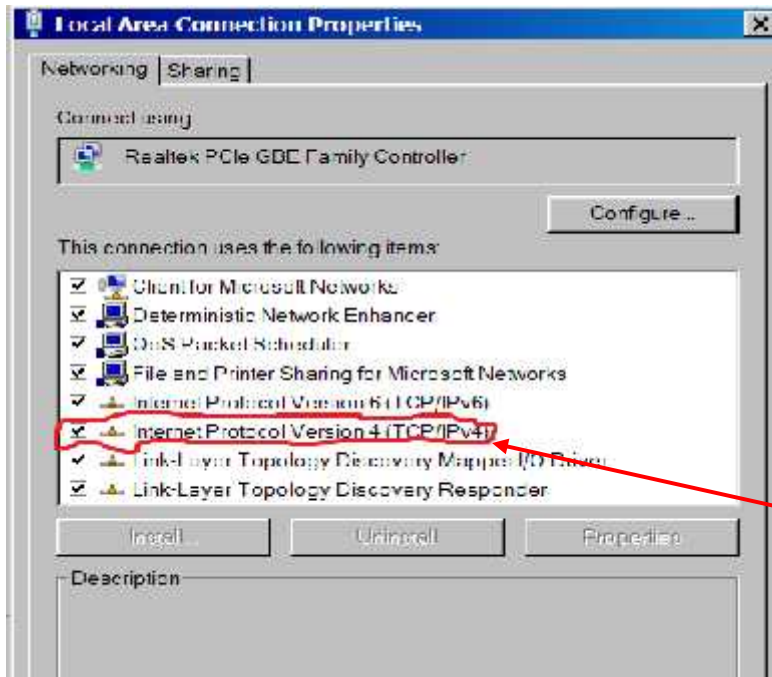


Step-3: Once you open Network and sharing center then you will see Local area connection only if you are connected to wired network.



Once you double click on the Local area connection then you will find below type screen,

Step-4: Please click on the marked option in RED color



Step-5: Please only make changes on the second option circled below.
Please add DNS entries **10.0.6.6** and **10.0.4.6** as shown below
Once you add these entries then please click ok.

